

RANBP3L Rabbit pAb
RANBP3L Rabbit pAb
Catalog # AP93954**Specification****RANBP3L Rabbit pAb - Product Information**

Application	WB, IHC-P, IHC-F, IF
Primary Accession	Q6PDH4
Reactivity	Mouse
Host	Rabbit
Clonality	Polyclonal
Calculated MW	52 KDa
Physical State	Liquid
Immunogen	KLH conjugated synthetic peptide derived from mouse RANBP3L
Epitope Specificity	331-430/491
Purity	
affinity purified by Protein A	
Buffer	0.01M TBS (pH7.4) with 1% BSA, 0.02% Proclin300 and 50% Glycerol.
SUBUNIT	Interacts with SMAD1, SMAD5 and SMAD8.
Important Note	This product as supplied is intended for research use only, not for use in human, therapeutic or diagnostic applications.

Background Descriptions

RANBP3L (RAN Binding Protein 3 Like) is a Protein Coding gene. An important paralog of this gene is RANBP3.

RANBP3L Rabbit pAb - Additional Information

Gene ID 223332

Other Names

Ran-binding protein 3-like, Ranbp3l

Dilution

WB~~1:1000<br \>IHC-P~~N/A<br \>IHC-F~~N/A<br \>IF~~1:50~200

Format

0.01M TBS(pH7.4), 0.09% (W/V) sodium azide and 50% Glyce

Storage

Store at -20 °C for one year. Avoid repeated freeze/thaw cycles. When reconstituted in sterile pH 7.4 0.01M PBS or diluent of antibody the antibody is stable for at least two weeks at 2-4 °C.

RANBP3L Rabbit pAb - Protein Information

Name Ranbp3l

Function

Nuclear export factor for BMP-specific SMAD1/5/8 that plays a critical role in terminating BMP signaling and regulating mesenchymal stem cell differentiation by blocking osteoblast differentiation to promote myogenic differentiation. Directly recognizes dephosphorylated SMAD1/5/8 and mediates their nuclear export in a Ran-dependent manner.

Cellular Location

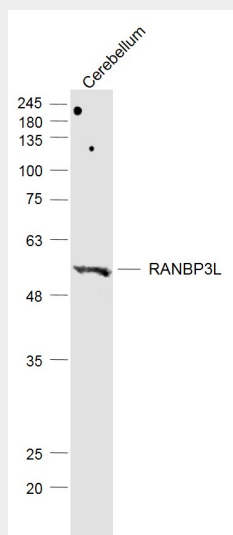
Nucleus. Cytoplasm

RANBP3L Rabbit pAb - Protocols

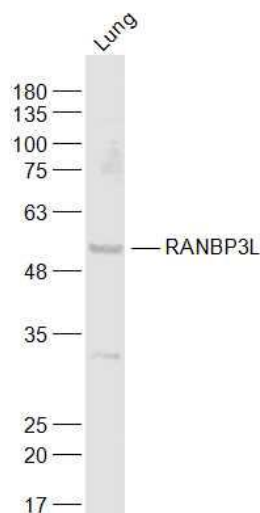
Provided below are standard protocols that you may find useful for product applications.

- [Western Blot](#)
- [Blocking Peptides](#)
- [Dot Blot](#)
- [Immunohistochemistry](#)
- [Immunofluorescence](#)
- [Immunoprecipitation](#)
- [Flow Cytometry](#)
- [Cell Culture](#)

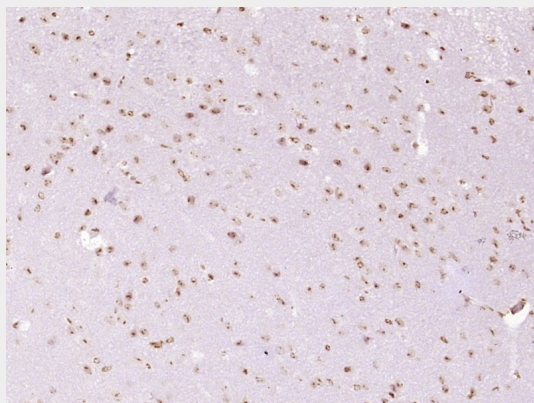
RANBP3L Rabbit pAb - Images



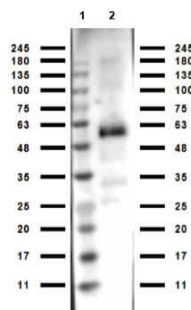
Sample: Cerebellum (Mouse) Lysate at 40 ug Primary: Anti-RANBP3L (AP93954) at 1/1000 dilution
Secondary: IRDye800CW Goat Anti-Rabbit IgG at 1/20000 dilution Predicted band size: 52 kD
Observed band size: 52 kD



Sample: Lung (Mouse) Lysate at 40 ug Primary: Anti-RANBP3L (AP93954) at 1/1000 dilution
Secondary: IRDye800CW Goat Anti-Rabbit IgG at 1/20000 dilution Predicted band size: 52 kD
Observed band size: 52 kD



Paraformaldehyde-fixed, paraffin embedded (Mouse brain); Antigen retrieval by boiling in sodium citrate buffer (pH6.0) for 15min; Block endogenous peroxidase by 3% hydrogen peroxide for 20 minutes; Blocking buffer (normal goat serum) at 37°C for 30min; Antibody incubation with (RANBP3L) Polyclonal Antibody, Unconjugated (AP93954) at 1:400 overnight at 4°C, followed by operating according to SP Kit(Rabbit) (sp-0023) instructions and DAB staining.



Western Blot of Rabbit anti-Monkey IgG antibody. Lane 1: Opal PreStained Molecular Ladder (p/n MB-210-0500). Lane 2: Monkey IgG (p/n 017-0102). Load: 50 ng per lane. Primary antibody: Monkey IgG antibody at 1:1000 for overnight at 4°C. Secondary antibody: Gt-a-Rb HRP (p/n

611-103-122) secondary antibody at 1:70,000 for 30 min at RT. Block: MB-070 for 30 min at RT. Predicted/Observed size: 55 kda for Anti-Monkey IgG.

RANBP3L Rabbit pAb - Background

This product as supplied is intended for research use only, not for use in human, therapeutic or diagnostic applications.